

A professional resource for the design curious.

INDESIGN

XXV

Guest Editor
Colin Seah

INDE.Awards 2025 Winners
The Standard, Singapore by Ministry of Design
The Brewery by Tzannes
Bundarra by Smart Design Studio and Those Architects
The Celebration Issue

INDESIGNLIVE.COM

Issue #94 / Australia \$16.50 / New Zealand \$17.50 / Singapore \$12.95 / U.S. \$21.99



IN

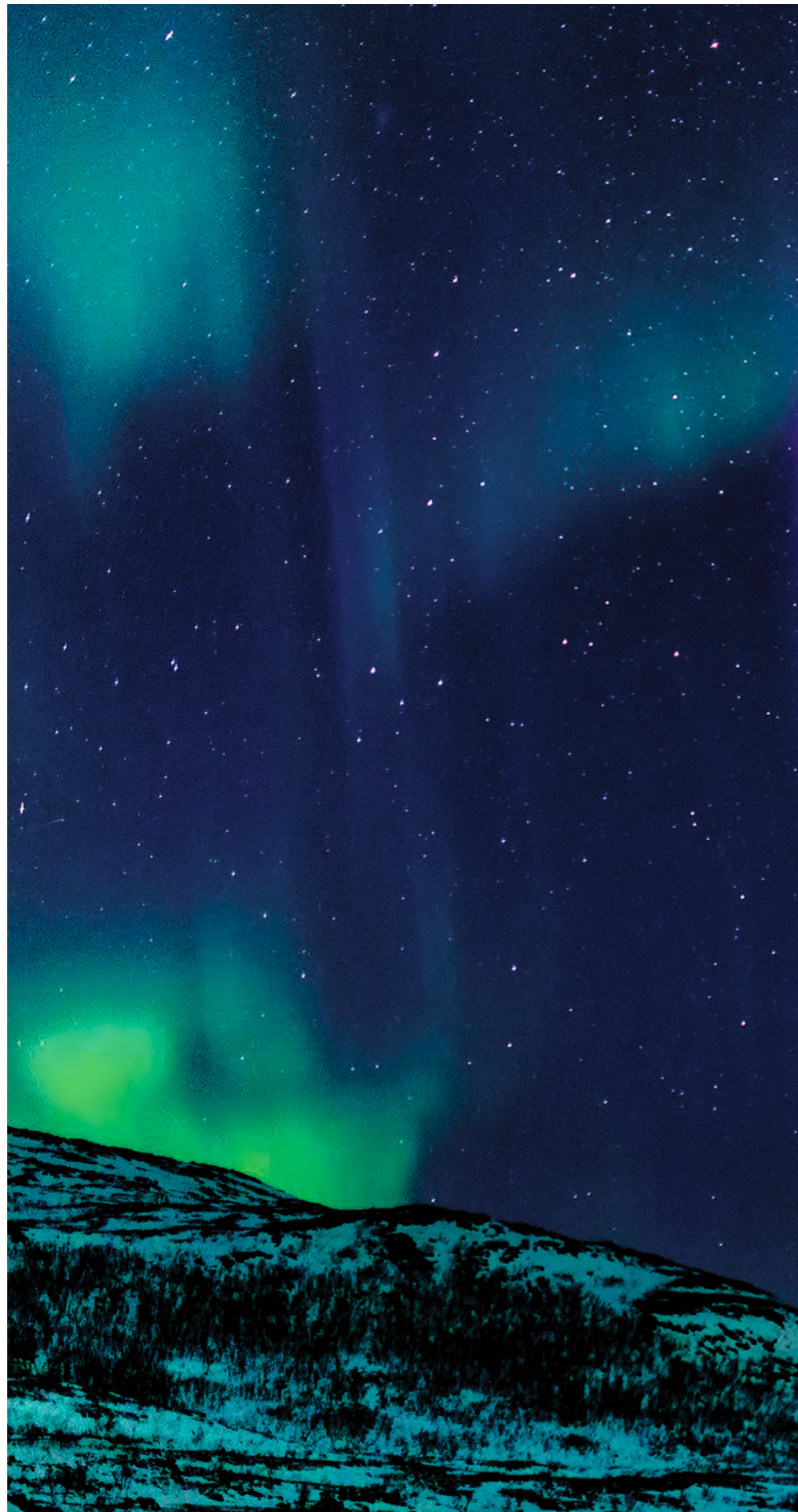
INSPIRE

SHORT

A world of light

Arctic by BIG, designed for Artemide, reflects and deconstructs reality. Effectively an Archimedean solid without external faces, the light's structure becomes a mingled world of its own light, natural light, and the surrounding environment. Formed from geometric elements that break apart and reassemble in modular compositions, the mirrored surfaces multiply and shift. Photo, Pierpaolo Ferrari.

artemide.com





The red room

Opening in New Delhi's prestigious The Chanakya mall this year, Baccarat, the iconic French Maison of art de vivre for over 260 years, builds on its legacy and deep-rooted ties with India, beginning a new chapter with the inauguration of its gorgeous flagship store.

baccarat.com





A new era for Australian design. Discover NAU's new and iconic designs.
naudesign.com | [@nau_design](https://www.instagram.com/nau_design)

NAU is a leading design brand with a refined yet effortless design language -
innately Australian, yet of global significance.

n a u



Papa puff daddy

"I imagine visitors assembling to watch these giant figures come to life. As the dawn breaks, they see *Skywhalepapa* and *Skywhale* take shape and ascend into the air together, connected by a bond of care. It is a simple story, but a beautiful and uplifting one. With a single skywhale figure we have a character, but with the two we have a relationship and a narrative," says Patricia Piccinini. The *Skywhales* are touring regional Australia.

Patricia Piccinini, *Skywhalepapa*, 2020, National Gallery of Australia, Kamberri/Canberra. nga.gov.au



BEGA

Indoor lighting with character

The sophisticated mesh texture of our new luminaire series is setting standards for design with a fascinating depth effect. Experience decades of indoor lighting expertise, now in a whole new dimension. bega.com/interior

Das gute Licht.

Earthly aspirations

With a rich warm palette reflective of the Australian landscape, the new V-ZUG showroom in Richmond, Melbourne, is warm and inviting. Working with Ross Gardam for furniture and lighting, and DesignByThem, V-ZUG's global interior art director, Gabriel Castelló Pinyon has crafted a space that celebrates both the V-ZUG brand and the local design culture. Bravo!

VZUG.com



Tile mania

Tiles are so right now it hurts, and with tiles used for floors, pillars, tables, and more, the Academy Tiles showroom in Redfern presents tiles from both the practical and fun perspectives. The large table is particularly impressive, as are the highly detailed mosaic and the large swathes of tiles.

academytiles.com.au

Minimalism meets meaning

Indesign ♥ Humanscale

Humanscale's World LM chair—designed by the legendary Niels Diffrient—embodies a rare harmony of ergonomic intelligence and environmental integrity. This streamlined evolution of the iconic World chair is a distillation of ergonomic excellence. Moreover, the World LM's patented Form Sensing Mesh and weight-sensitive recline adapt seamlessly to the user, eliminating the need for manual adjustments and encouraging spontaneous, healthy movement. With 38 percent pre-consumer recycled content and 95 percent end-of-life recyclability, it is a model of circular design. With more than 3 global environmental certifications, World LM reflects Humanscale's unwavering commitment to sustainable innovation. Experience Humanscale's World LM in their newly opened Sydney showroom, at 75 Pitt Street.

humanscale.com







Making connections

JLL continues to shine as the go-to resource for an all-inclusive solution. Each JLL project, while unique, is underpinned by the core focus of location, purpose and context. Effectively this approach forms the foundation of JLL's project and development services (PDS); offering bespoke solutions informed by the research and data that JLL has become renowned for.

One of the world's largest and most diverse commercial real estate firms, notably recognised amongst the top 200 companies on the prestigious Fortune 500 list, JLL has been delivering projects in Australia for over 25 years. The PDS offering has evolved with the market, and their inhouse team is now celebrated for creating high functioning workspaces that are precisely aligned to end user needs. This begins with the collaboration of JLL's Design and Advisory teams who work with clients in the early stages of their planning to understand their business, its values and goals for the future. The insights gained inform the workplace and design strategy which notably vary for every project. The Design and Advisory teams work seamlessly together, going one step further to ensure the workplace

experience is elevated. Alana Hannaford, Head of PDS Advisory, Australia and NZ notes, "As humans, we want an elevated experience every day. What this means is that an experience needs to curate four things: a sense of community, personalisation, values alignment, and memorable moments."

Brought to life by JLL's Project Management and Construction team, each project is carefully managed through all stages, from finding the right site through to delivery. In the recent Melbourne and Sydney JLL office fit-outs, there was an increased efficiency in project delivery through prioritising local teams and suppliers. Sustainability is also a core focus with materials selected for longevity, environmental impact and minimal waste; 92 per cent of construction waste was recycled on the Melbourne JLL office fit-out.

The new JLL offices make for excellent case studies with the Melbourne office eNPS (employee Net Promotor Score) shifting from 83 per cent to 96 per cent satisfaction post renovation, and in Sydney, the year-to-date office occupancy rate sits at 97.5 per cent, well above the national 76 per cent average.





To a large extent, the end user experiences, such as a café and cohesive design elements that speak to local culture and history, provide consolidation and connection to place.

Coming to terms with a post COVID workforce who were used to working at home was also of paramount importance to consider in the process. Alana Hannaford asked, “How do we create an environment that inspires the hearts and minds of the people who turn up to work every day?” Culture is key to this, so JLL’s design response was to look at the environment and the very particular elements of Melbourne that would make a workplace desirable and an ‘elevated experience’. The design was very much about connecting to the history of place with elements such as the Hoddle Grid (Melbourne’s grid of streets), the rag trade industry and Flinders Lane which were woven into the identity of the project. Senior Director and JLL’s Design Practice Lead, Jennifer Moore noted, “We wanted our people to see our workplace as an extension of their home. We looked at the urban precinct where our office was located, what’s on offer in our building from a well-being perspective, and through design, we created something truly special,” she says.

Part of the solution was the creation of inhouse cafés, in both Sydney and Melbourne, partnering with local coffee houses to ensure excellence in barista services. Now, the office is a collegiate space that is relaxed and friendly. “A colleague walked into the office on day one and said, ‘It felt like they were being embraced by a warm hug.’

I think it’s lovely that this is the feeling we have managed to create,” says Catherine Wild-Taylor, JLL’s Associate Designer.

To a large extent the end-user experiences, such as a café and cohesive design elements that speak to local culture and history, provide consolidation and connection to place. As a workplace strategy however, what they achieve is manifold with greater one-on-one connection sparked by causal interaction, which in turn leads to greater collaboration and productivity. It also leads to greater workplace satisfaction, as the statistics attest, and there can be no higher achievement.

Previous left: Free flowing connectivity in JLL Sydney. Previous right: Casual breakout spaces foster spontaneous collaboration.
Opposite top: JLL Melbourne’s in-house café. Opposite bottom and above: Considered materials tie JLL offices to location and history.



KROST.

SINCE 1989 | @krostfurniture



DESIGNED FOR PEOPLE,
BUILT FOR ADAPTABILITY



Celebrating its 50th anniversary is one of Donald Judd's most significant artworks and certainly one of Australia's most prized possessions, albeit a somewhat unknown one.



Donald Judd in South Australia

Part of the Art Gallery of South Australia's collection, the remarkable triangular sculpture *Untitled*, 1974-75, is the only site-specific Donald Judd piece in the southern hemisphere.

How a masterwork of one of the great American minimalists came to be in South Australia is a story of both opportunity and controversy. Judd (1928–1994), initially proposed a site-specific work in Sydney while visiting Australia in 1974 for the exhibition *Some Recent American Art*, on tour from New York's Museum of Modern Art. When a suitable Sydney site could not be found, John Baily, AGSA's then director, was thinking on his feet and offered AGSA's courtyard as an alternative.

Using a formwork method that he developed with his first concrete work, *Untitled*, 1971, in Connecticut, Judd worked with engineer Philip Fargher and local construction company Marshall & Brougham to complete the 7.6-metre-long triangular form. "Permanent pieces like *Untitled* at the Art Gallery of South Australia gave Don a chance to expand and experiment. One of the great things about a permanent work is that Don could explore materiality and deal with something like concrete, which you wouldn't necessarily do with something smaller that would live on a wall,"

says Flavin Judd, Donald Judd's son and artistic director of the Judd Foundation.

Working directly with the sloping land, the shape became triangular and emerged as an expression of sharp geometric angles and horizontal lines, features now synonymous with Judd's oeuvre. "Some artists are radical but not visually interesting, and some are aesthetically interesting but not radical. It's rare for those two qualities to come together, and it's even more rare for an artist to work across art, architecture and design. I think that's what makes Don so unique as an artist," says Flavin.

The 1975 unveiling was not without controversy. In the last phases of the Vietnam War, anti-American sentiment ran high, and Judd's sculpture commission caused public outcry. Local academics joined with students, political groups, and the media to denounce it as 'American imperialism'.

Fifty years on, the work is being newly celebrated: "What came about as a fortuitous opportunity fifty years ago is now one of AGSA's most compelling works," says AGSA director Jason Smith.

agsa.sa.gov.au



Handmade Luxury Underfoot

Creating custom rugs & bespoke
carpets for almost 40 years.

DESIGNER RUGS.

The Custom Made Specialists

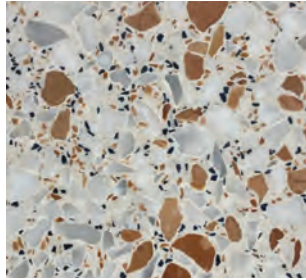
designerrugs.com.au | Sydney Melbourne Brisbane



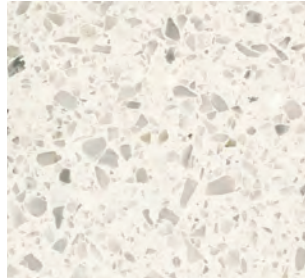
ANTERIOR XL

Embrace the timeless appeal of this classical terrazzo in

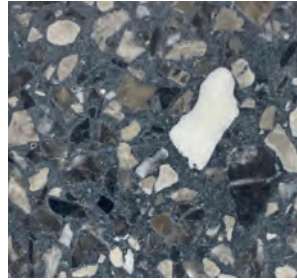
myriad colours, finishes and designs, more colours available on our website.



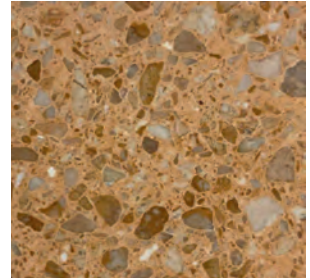
BRINDISI



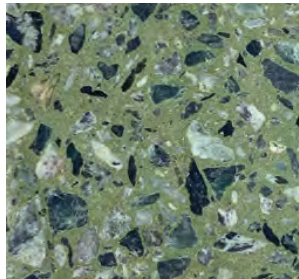
LUCCA



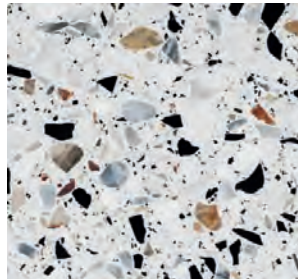
RAVENNA



FERRARA



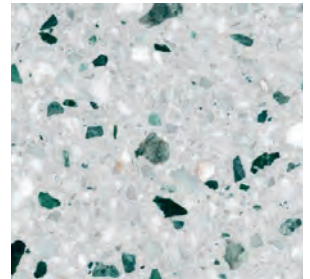
TRENTO



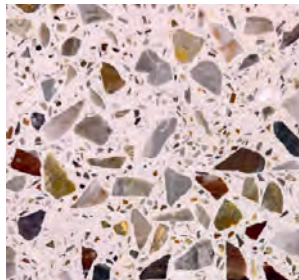
TRIESTE



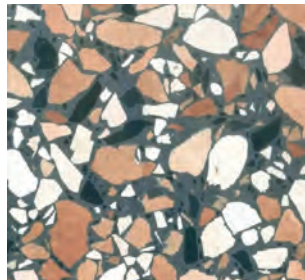
TURIN



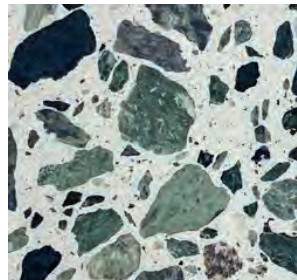
LIVORNO



PORTOFINO



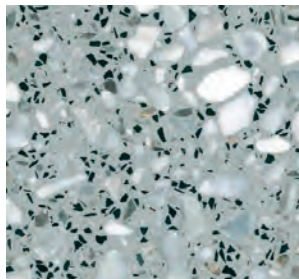
RIMINI



ASTI



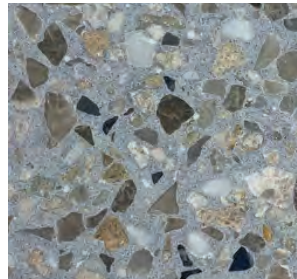
AVELLINO



BENEVENTO



CATANIA



FLORENCE



IMPERIA

AnteriorXL is the trusted supplier of the finest Italian terrazzo, natural stone, and porcelain slabs — all available in stock now from our Alexandria warehouse.

**ANTERIOR XL 4/119-133 McEvoy Street,
Alexandria NSW 2015
NSW 02 9555 6000
anteriorxl.com.au**

Pure abstraction

Indesign ♥ GH Commercial

Always on point, Melbourne Design Week 2025 saw Geelong-based GH Commercial partnering with artists Rowena Martinich and Geoffrey Carran to present Spectra—an immersive installation that transformed the lobby of Rydges Melbourne into a living artwork. Committed to local design and manufacturing, this collaboration highlighted GH Commercial's ability to translate sweeping, painterly compositions into high-performance carpet.

ghcommercial.com



A kapow of colour

Comprising a new clubhouse and a community hub for young professionals, Piccadilly Club, Bengaluru, is essentially a non-monetised component of the Orchid Piccadilly residential complex. Tasked with creating a high-quality environment without heavy investment in its overall build, Studio Lotus drew on an earthy palette of robust and low-maintenance materials such as concrete, brick, and stone. The strategic use of colour injects the project with a sense of lightness that balances the otherwise near-brutalist shell, which in turn is reinforced by a magnificent staircase. Photo, Ravi Asrani.

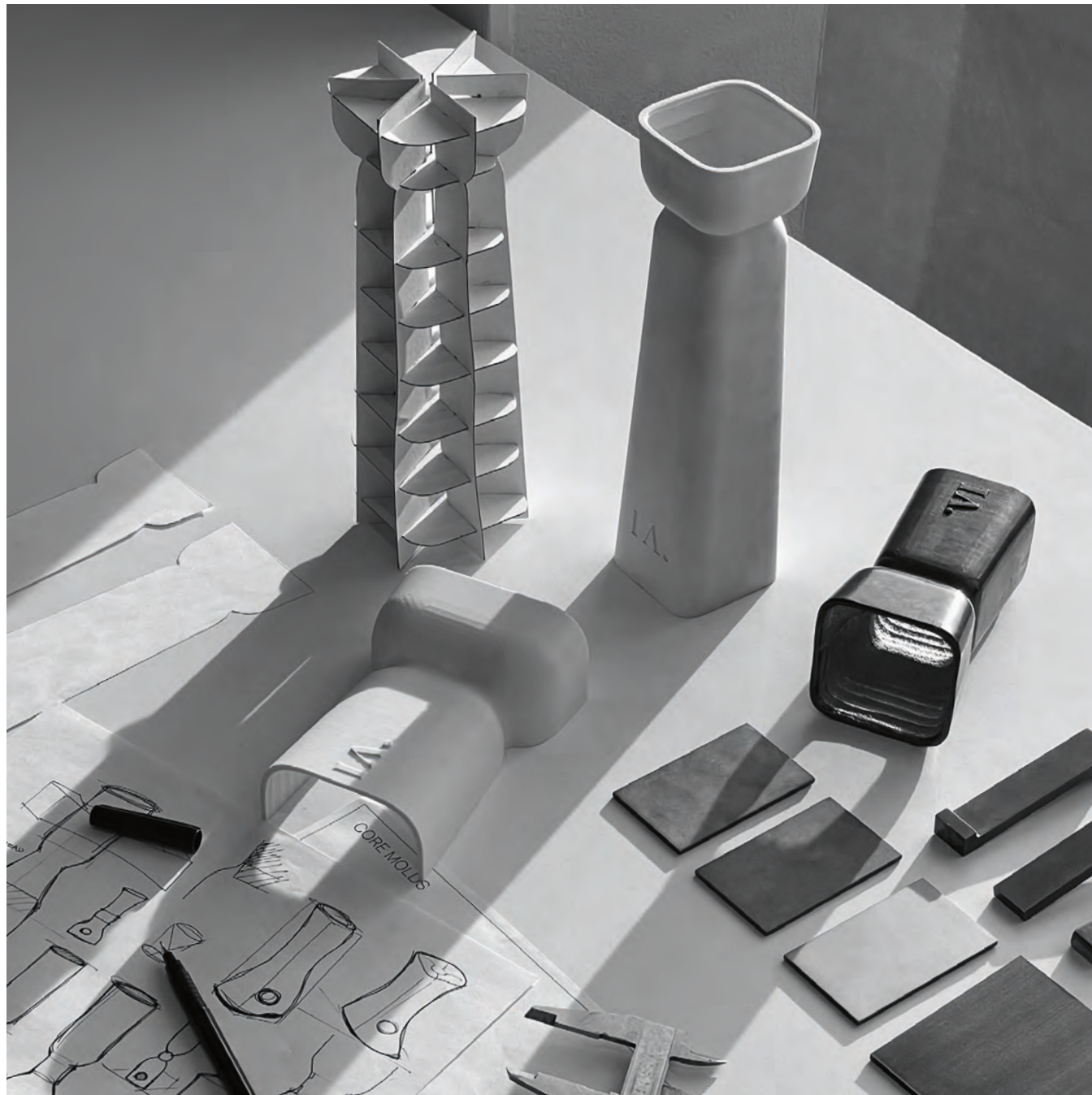
studiolotus.in



**INDE.
AWARDS**

**OFFICIAL 2025
TROPHY PARTNER**

Combining industrial design process, innovation and craftsmanship, each trophy is a unique work of art.



Tilt Industrial Design is a multi-disciplinary design practice working across architecture, landscape, and public art to shape meaningful experiences throughout the built environment.

Tilt

tilt-industrialdesign.com



Paired perfection

When it comes to leisurely long lunches and dallying over dinner, comfort is paramount. Granted, the food has to be excellent and the style just right. But it is the whole combination that Luchetti Krelle have excelled in with Cibaria Restaurant in Manly, setting the scene with the beautiful Oleandro Chairs from OBODO Contemporary Furniture. Bliss. Photo, Steven Woodbury.

obodo.com.au



Welcomed to the Australian design scene in 2024, Kokuyo is set to redefine collaboration, bringing its unique blend of colour and function to individuals and corporations, designed to be used Any Way!

Be unique

In a dynamic work environment, embracing individuality and fostering unique ways of working are paramount. The latest furniture collection from Kokuyo, Any Way, offers a fresh perspective, seamlessly supporting environments that foster both spontaneous interaction and focused, in-depth work. Designed to enable diverse work styles, creating spaces where creativity and innovation can truly flourish Any Way.

The true power of the Any Way collection lies in its ability to seamlessly integrate distinct working modes, empowering each team and individual to find their optimal flow. This means teams can work more intuitively, efficiently, and effectively, providing the right environment and ultimately fostering a more dynamic, collaborative, and inclusive environment.

The Any Way collection embodies a design philosophy centred on 'noiseless comfort,' striving for intuitive usability that integrates into any workspace without imposing a rigid structure. This comprehensive range includes chairs, tables, sofas, trolleys, space dividers, media tools and accessories, all designed for easy rearrangement and combination to create diverse collaborative settings.

Aesthetically, each piece features a simple, streamlined design with uniform colouring, including the castors, offered in a versatile

palette that allows the furniture to either blend harmoniously or provide a striking accent. Enhancing the unique personality of any space, their supremely functional nature ensures they can be easily configured for expanded, contracted, or specialised needs that cater to individual preferences. Notably, the Any Chair and Any Table are certified under the SUTENAI CIRCLE mark, signifying their adherence to Kokuyo's robust sustainability standards.

Established in Osaka in 1905, Kokuyo's dedication to understanding and shaping the evolving work environment took root in the 1960s with the inception of their 'Live Office' concept. This unique experiment transformed their own workplace into a dynamic showroom, allowing Kokuyo to continuously test and refine their products and spatial solutions in a real-time, living laboratory.

Kokuyo's commitment to experiential design and celebrating uniqueness culminated in The Campus, a 10,000 sqm experimental workplace in Shinagawa. Home to around 1,200 employees, The Campus is a testament to their adaptable philosophy, functioning as its own continuous case study. Reflecting Kokuyo's new corporate philosophy, 'be unique', The Campus also extends its influence beyond the workplace, with its ground and first floors open to the community.

Opposite: The Any Way collection from Kokuyo is designed to foster a collaborative work environment.



The art of stone

Designed in partnership with Intermain, CDK Stone's new Selection Centre in Alexandria, Sydney, posits an immersive experience of luxury design inspiration. With the refined aesthetic of a luxurious residential interior, the showroom presents as an elegant suite of rooms in which to experience natural stone. Photography, Tom Ferguson.

cdkstone.com.au



Shiny, shiny

The ClassiCon Bow Coffee Table range, by Guilherme Torres, and the Bell Side and Coffee Tables, by Sebastian Herkner, have taken on a new shine in aluminium. With a linear, polished finish and matte sheen, the aluminium champions the futuristic lines of the 1970s these designs speak to.

classicon.com



KLARO INDUSTRIAL DESIGN DOES ABSOLUTE DOMESTICS HQ

Beige Steps Up: The New Black Dress of Interior Architecture in a Female-Led Workspace

1 | CONUS h/a table
4 | CONUS table

2 | FATI hanging cachepot
5 | RAPT acoustic walls

3 | OBLONG workstation
6 | HALFMOON bench



Ethical timber

Indesign ♥ Elton Group

The exceptionally unique and beautiful curated timber veneers of Elton Group proved the perfect material choice for In Addition Studio's retail fit-out for July's Chadstone store. Selecting the highly figured pattern of Evener Raw ALPI California Burl, to sit with neutrals and accents of red, the unique marriage of innovation and craftsmanship set the stage for Australia's premium luggage brand. Allowing designers to specify responsibly and ethically, Evener Raw is part of a curated range of timber veneers derived from sustainably grown plantation species.

eltongroup.com



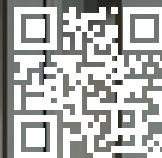
Paintscape

Performative rematerialisation of paint is a concept unto itself and wholly of the realm of Huseyin Sami's practice. Painting from a distance with room-width rollers, from the floor with arms bound, or by cutting a reversed colour field, each artwork is effectively the by-product of the performance, whether viewed or not. Image, *Untitled (PP) #2*, 2024, courtesy the artist and Sophie Gannon Gallery.

sophiegannongallery.com.au

Geometry, harmony & beauty.

The inaugural Co.Lab collection is a bold collaboration with award-winning Australian design icon Greg Natale. The Bosco Collection merges Natale's signature tessellating designs with the warmth and natural beauty of solid European oak.



Piero Chiaro by Greg Natale

Tongue
&Groove × GREG NATALE

tongueandgroove.com.au/colab/greg-natale



Seat satisfaction

Indesign ♥ Pedrali

With its elegant teak frame and woven elements, Griante, by CMP Design for Pedrali, is the perfect chair for an outdoor lifestyle. "Griante is the name of a town overlooking Lake Como, our chosen backdrop. When we sit outside, we like to look out over the lake. This is how we like to imagine someone else sitting on Griante, experiencing the same pleasure that this lovely place gives us," says CMP Design.

pedrali.com

Cloud nine

Inspired by the ethereal beauty of clouds, Ross Gardam's Aeris range embodies softness and light through the repetition of sculptural forms. Each mouth blown glass cloud is paired with architecturally crafted brass bars that lightly kiss together, imbuing the whole with a sense of weightlessness.

rossgardam.com.au



From Milan to Japan

Words Sara Bordina



This year's Milan Salone was exceptional, with some outstanding pieces and collections on offer from all the world's greatest designers. In particular, we were impressed by the new collections from Maruni Wood Industry. With wood as the foundational material for each piece, the designs from Naoto Fukasawa, Jasper Morrison, and Cecilie Manz had a natural elegance that immediately caught our attention. We were so impressed, in fact, that we followed up Milan with a trip to Tokyo to experience the new collections in full.

The collection from Naoto Fukasawa, comprising the Meguro lounge chair and ottoman, feature a beautiful and softly contoured backrest and seat. The organic shape is synonymous with Naoto Fukasawa's design, and for this range he worked closely with a craftsman to create the subtle curves. With a sense of warmth and welcome, its handcrafted aesthetic invites the hand and draws the body in with an invitation of comfort.

Expanding Naoto Fukasawa's Hiroshima sofa range is a gently angled module that introduces a new dimension to possible configurations. Its subtle curve softens the whole and brings a sense of comfort and embrace.

We have been following the collaboration between Jasper Morrison and Maruni closely and could feel something brilliant was in the works when Maruni presented a prototype of the Lightwood Sofa in 2024. It was thrilling to see the sofa resolved, in production and as beautiful as expected. Expanding the Lightwood family, with its signature light wooden frame and soft, comfortable cushions, the sofa brings a sense of ease and refinement to everyday life.

The Jasper Morrison T&O collection is also expanding with a new T&O T1 Task Chair. This collection, which started in 2016, has been thoughtfully added to on a regular basis. Simple and warm, the chair comprises 3D-machined solid pieces of timber in oak, maple, or ash, over a practical steel base. Moreover, the chairs prove that timber can be extremely comfortable when worked with care.

Cecilie Manz is a designer who always inspires, and we have been very pleased to stock her EN Chair and Plint bench seat, as such we are delighted with her new SHOTO bar table. Continuing her refined aesthetic, the table features a solid wood tabletop with a gently concave rim that subtly defines its surface. Presented in two heights and five wood types, including solid ash and hinoki, the table harmonises beautifully with the rest of the SHOTO collection.

Above left: Meguro lounge chair by Naoto Fukasawa. Above right: Lightweight Sofa by Jasper Morrison.



Super Singapore sixty

Each year, the wonderful Supermama in Singapore releases a special edition of their Singapore Icons plate series. Having received the President's Design Award, Singapore, this year is being celebrated in style with the SG60 plate marking Singapore's 60th birthday with a classic full gold edition. Shiok!

supermamastore.com



Milliken

WHALE SONG

The Whale Song collection by Milliken, inspired by the acoustic patterns of whale communications and their underwater movements, is crafted using ECONYL® yarns made entirely from regenerated nylon waste, including abandoned fishing nets.

This collection boasts a low embodied carbon footprint of 4.2 kg/m² CO₂e and is 100% locally recyclable through Milliken's N/XT LIFE™ Circularity Program.

millikenfloors.com.au



Six icons

Indesign ♥ Caesarstone

The ban on engineered stone has prompted innovation and care with Caesarstone ICON Advanced Mineral Surfaces delivering a resounding win for the consumer, the designer, the fabricator and the planet. Well ahead of the ban, Caesarstone led the field with its January 2024 launch of a crystalline silica-free blend, which is also free of VOCs. This year sees six wonderful new designs join the range. Well done.

caesarstone.com.au

Sound solutions

Indesign ♥ Autex Acoustics

Inspired by the way light and shadow animate shape, Verve Contoured Panels, the latest range from Autex Acoustics, moulds static surfaces into sculptural features of sublime beauty. Windswept, for example, evokes wind-swept sand dunes, and delivers the gentle rhythm of nature, while creating an organic sense of calm.

autexacoustics.com.au



Design that's reflective of country.

In designing the Bilya Koort Boodja Centre in Northam, Western Australia, architects Iredale Pedersen Hook (IPH), consulted extensively with Nyoongar elders to create a space for local indigenous communities to share their unique wisdom and culture.

The building opens-out to face the Avon River, which is culturally tied to the people in the Ballardong region and is reflected in the building's form. The monochromatic use of COLORBOND® steel for the cladding in the muted tone of Monument® creates a sense of shadow that adds to the mystery of the building.

Be inspired by this and other award-winning steel designs by visiting [SteelSelect.com/SteelProfile](https://www.steelselect.com/SteelProfile)



BILYA
KOORT
BOODJA



WATCH NOW

COLORBOND®, BlueScope, the BlueScope brand mark and ® colour names are registered trade marks of BlueScope Steel Limited. © 2022 BlueScope Steel Limited ABN 16 000 011 058. All rights reserved.

Authentic icons

Indesign ♥ Living Edge

Celebrating 25 years at the forefront of authentic design in Australia, Living Edge has been a champion of original design, bringing the world's most iconic furniture and lighting brands to Australian shores. A trusted partner to architects, designers and design enthusiasts alike, Living Edge is where many of us first experienced those designers whose work we now love. Congratulations and thank you.

livingedge.com.au



Everyday iconic

Indesign ♥ Harvey Norman

Crafted to elevate everyday rituals, Axor tapware is where great design meets German engineering precision at Harvey Norman. Created in collaboration with iconic designers including Philippe Starck and Antonio Citterio, the Axor collections are sculptural statements of refined elegance.

harveynorman.com.au



Authentic design

Sustainable, beautiful, and so completely of the moment, Singapore-based Ministry of Design (MOD) has included American hardwood as a mood-defining feature of Kaya restaurant in The Standard, Singapore.

Set within the lush gardens of The Standard, Singapore, Kaya is a Japanese-inspired restaurant of absolute charm. With an exotic floral wall mural, cascading plants, bespoke furnishings in rich green and brown, plus floating sculptural lights, Kaya is a sumptuous retreat that defines the mid-century allure of the hotel.

Framing and adding complexity to the restaurant's tonal palette is a floor of American white oak supplied by World of Wood (WOW). For WOW, the recommendation of American hardwood to MOD director Colin Seah felt appropriate. "The vision for the space was all about warmth, connection, and a kind of quiet sophistication, and we knew the floor had to support that," says Mr. Mohammad Zain Bin Abdul Hamid, managing director of WOW.

To this end, WOW focused on creating a finish that felt worn-in, welcoming, and as Zain posits, "a little storied, like it had already lived a few good years." To create a one-of-a-kind finish that was rich in character, the American white oak was hand-worked to bring out its natural texture.

Authenticity was paramount to the design language, and WOW responded by taking inspiration from historic woodworking methods. This included the craftsmanship techniques of early American builders who shaped timbers using broad axes and pitsaws to hew beams for barns and mills. In using these methods, the American white oak is carefully worked to reveal the natural grain, enhance its tactile quality, and imbue each board with the subtle imperfections of life. "Everything was tailored to the restaurant's palette and lighting, so the floor doesn't just sit there, it really helps shape the mood. It's the kind of space where you want to stay a little longer, and we love that the floor plays a role in that," says Zain.

When it comes to sustainability, MOD specifies environmentally sound and responsible materials wherever it can. The US forest resource has been sustainably managed for generations. Naturally regenerating, American white oak is growing more quickly than it is harvested. Indeed, the American Hardwood Export Council works closely with producers and industry bodies across North America to guarantee supply-chain transparency, carbon neutrality, and ecological health.

Above: American white oak brings warmth and history to Kaya at The Standard, Singapore by Ministry of Design. Photo, Jovian Lim.



Position perfect

“When we came across this site, we instantly fell in love. It felt like the perfect setting for our new Sydney home, with the remarkable architecture by John Wardle and the beautifully curated communal spaces by Flack Studio,” says Mobilia’s founder Salvatore Fazzari, of the new Mobilia showroom in Alexandria, Sydney, with interiors by GOLDEN. Photo, Anson Smart.

mobilia.com.au

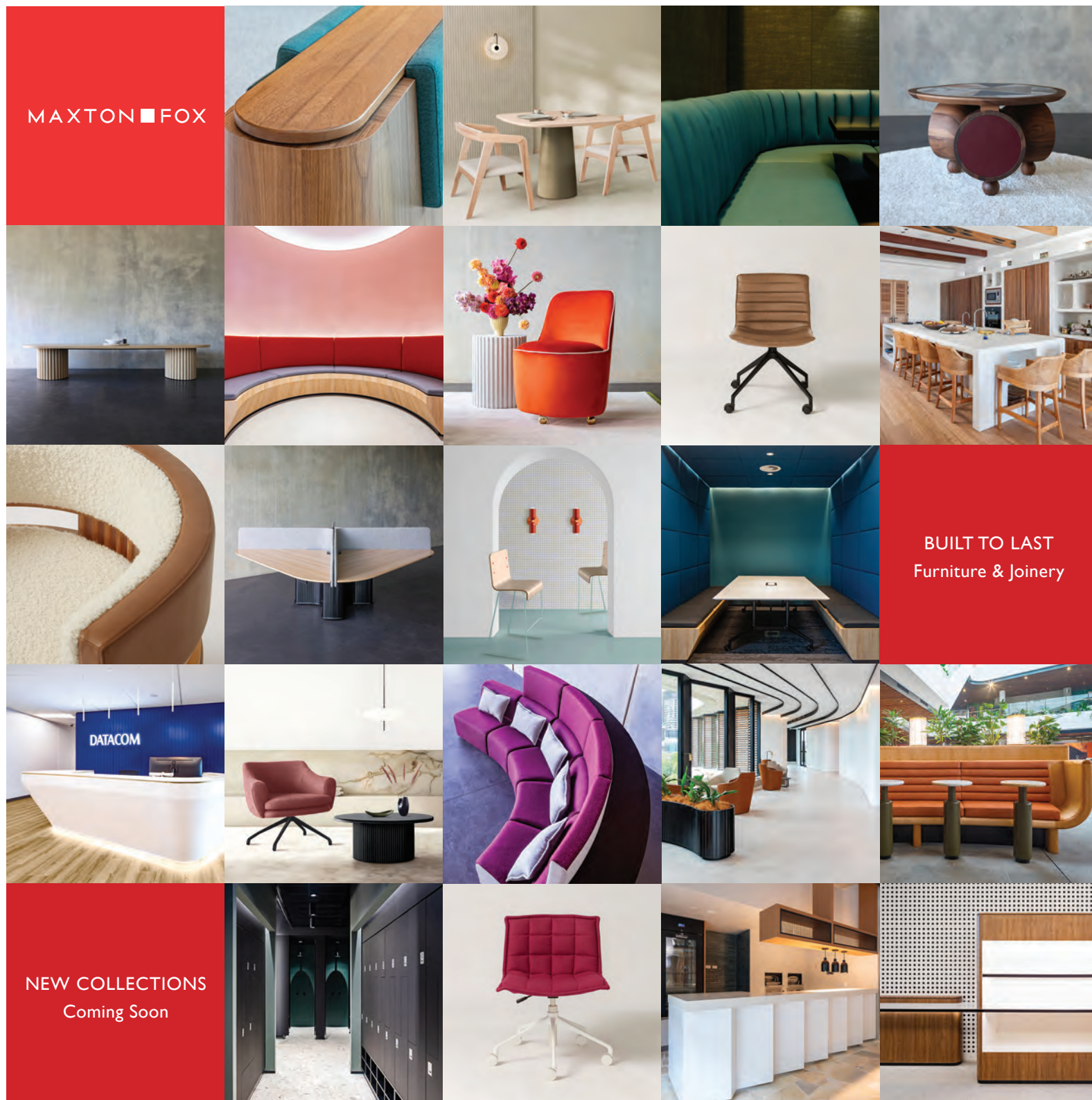
Mansion intervention

The Storm, The Craft & The Future: The Anton Gerner Exhibition II sees Anton Gerner experimenting with new ideas and techniques to bring seemingly impossible ideas to life. Creating a counterpoint between his contemporary pieces and the Victorian-era opulence of the National Trust’s mansion, Labassa, Gerner flipped the narrative for Melbourne Design Week.

antongerner.com.au



Work Life Style



MAXTON  FOX

 1300 MAXTON
www.maxtonfox.com.au



The perfect veil

Indesign ♥ Boyac

Negating glare, moderating temperature and giving UV protection, Swiss fabric manufacturer Création Baumann has developed a highly functional textile to meet today's workplace needs. Metallised with a sheer layer of aluminium, the fabric is designed to improve the indoor climate, allow for an uninterrupted visual connection to the outside world, and prevent glare and contrasts that affect computer screens.

boyac.com.au



COMMERCIAL

Godfrey Hirst

Celebrating 160 years of local manufacturing.

PROUDLY AUSTRALIAN AND
NEW ZEALAND MADE CARPETS

ghcommercial.com

1300 444 778

ESTABLISHED
1865



Precision spacing

Indesign ♥ Deco

Possibly the most versatile and easy to use cladding and screening system, DecoBatten's timber-look aluminium battens click into the matching base with options for single and multiple configurations. Powder coated to international architectural standards, the system ensures longevity and versatility, along with precise spacing for creating an effortless design. Absolutely genius.

deco.net.au

Lyrical curves

Indesign ♥ Tilt Industrial Design

When architect Luigi Rosselli envisioned a curved balcony that blurred the line between inside and out, he turned to Tilt Industrial Design. Reflecting elegant design and innovative engineering, the custom louvre system is a kinetic installation of recycled tempered glass, precision-crafted stainless steel, and UV-resistant resins, designed to withstand the corrosive nature of the sea air.

tilt-industrialdesign.com





Effortlessly Beautiful



The original **Super Durable™** timber-look powder coating for aluminium.

New colours out now. Order a sample at deco.net.au

CLADDING FACADES BATTENS SOFFITS CEILINGS PANELS DECKING FLOORING



Broadway Boogie Woogie on the Gold Coast

With architecture by Fraser & Partners (Australia) and interiors by Studio Carter (LA) and Alexander & CO. (Australia), Mondrian Gold Coast has claimed the luxury space for those wanting a larger accommodation package, with options for kitchens and laundries without going down the services apartment path.

mondrianhotels.com/gold-coast

The outdoor SPACE

Debuting with Patricia Urquiola's now-iconic Canasta collection in 2007, the launch of B&B Italia Outdoor marked a new chapter for this iconic brand. Since then, collaborations with renowned designers like Antonio Citterio and Piero Lissoni have set the bar high. Proudly, and in collaboration with Space Furniture, the world's first standalone B&B Italia Outdoor showroom has now opened in Sydney's Surry Hills. Congratulations.

bebitalia.com





Six iconic ICONs

Well ahead of the curve when it comes to sustainable and responsible design, Caesarstone was the first to introduce crystalline silica-free mineral surfaces to the Australian market and worldwide. Furthering this initiative, the Caesarstone ICON Advanced Mineral Surfaces collection upholds its commitment to sustainability, using natural materials and as much recycled content as possible (at least 80 per cent in each slab).

This year, Caesarstone is introducing six new designs to its Caesarstone ICON Advanced Mineral Surfaces collection. A direct response to the design sector's passion for the veining, striation, and complex colouring of marble, these colours reflect the shift towards warmer, earthier hues and a preference for reflective surfaces.

Recognised for its superior resistance to staining and wear, the highly durable surface of Caesarstone ICON will retain its natural beauty under the most vigorous of daily use. Perfect for Multi-res projects, hospitality, educational settings or bringing a gorgeous quality to any workplace, the six new designs, Rossa Nova, Celestial Sky, Calacatta Stillstorm, Lunar Frost, Glacier Flow, and Calacatta Dreamwave, introduce natural and nuanced tones to any interior.

Explored across a white or grey base layer, each of the new surfaces are beautifully resolved. For Rossa Nova, a warm white base is overlayed with a complex tracery of veining in the earthy hues of amber, taupe, and deep golden ochre. The look is one of raw authenticity; a highly tactile, natural surface.

Celestial Sky overlays its creamy white base with distinctive veining in earthy greys and browns, with subtle undertones. Fine fissures and impurities contribute to the authenticity and complexity of this natural surface.

The bright white base, featuring directional veining in a mix of soft greys and pewter, belongs to Calacatta Stillstorm. The luxury and elegance of this surface is further enhanced by silvery sediments and subtle mineral deposits in refined pewter tones.

Lunar Frost transforms a frosted grey base with an overlay, presenting as a direction drift of multi-form terrazzo chips in soft greys and earthy brown mineral deposits and creating a sense of movement and understated luxury.

The palest of steel grey forms the base of Glacier Flow. Expressive and luxurious, the surface is accented by a current of mid-size grey veins, silver mineral deposits, and icy white streaks that swirl across this base to create a sense of movement and drama.

Emulating the luxury of traditional Calacatta marble, Calacatta Dreamwave presents a muted white background with random and complex veining in deeper greys and subtle, earthy browns.

Sustainable, hard-wearing, responsible, and beautiful, each of the new Caesarstone ICON Advanced Mineral Surfaces will bring these resolute qualities to your design.

Above: Expressive and refined, Celestial Sky from the new Caesarstone ICON collection.